

D.B. R.B.

4-24-89

⊕

5/6 T7N R1E

3" Brass Weber Co. 1981

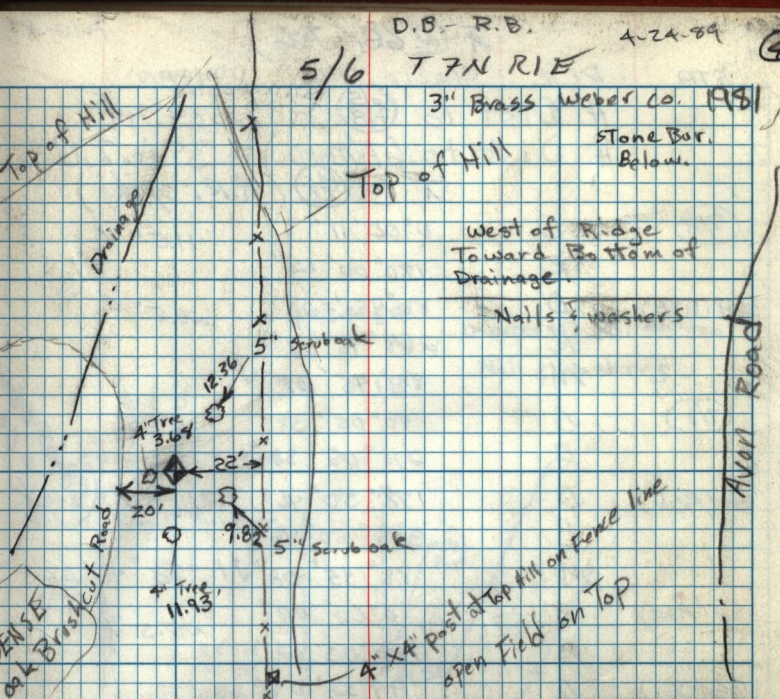
Stone Bur.  
Below.

Top of Hill

Top of Hill

West of Ridge  
Toward Bottom of  
Drainage.

Nails & washers



ENSE  
oak  
Brushcut Road

Avon Road

4" x 4" post at top hill on fence line  
open field on top

Get  
Forest  
something

Dist to ⊕ = 365.51'

Dist to 66 (sets) = 394.33''